

# Potenza™

## RF MICRONEEDLING

March 18, 2024

Confidential

Fusion Cushion Plus Tip Clinical Training



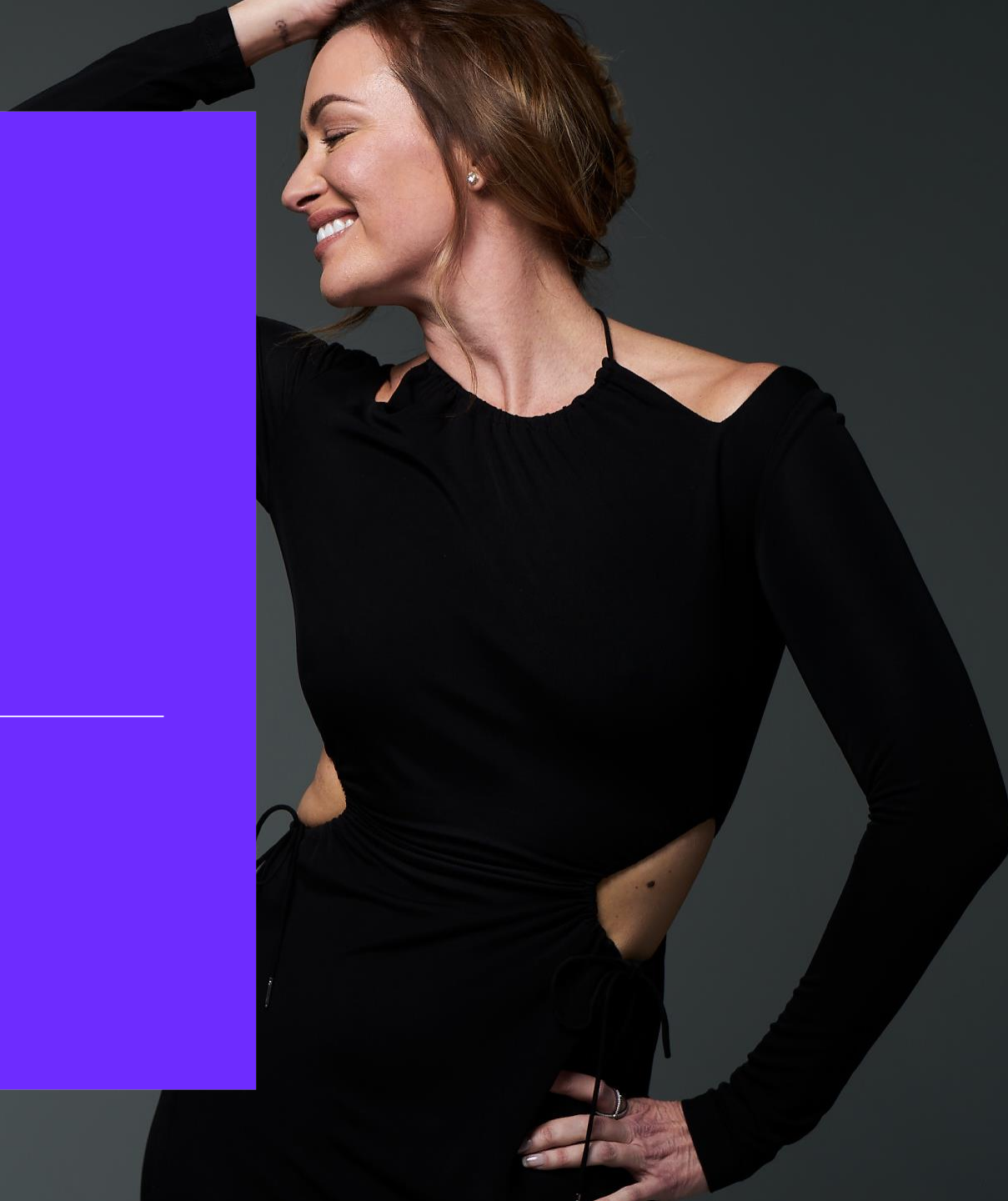
CYNOSURE® BEAUTIFUL  
ENERGY



# Product Overview

---

Potenza™  
RF MICRONEEDLING



# The Potenza Difference

**4 different RF modes** for shallow and deep treatments in one system

- Monopolar, Bipolar
- 1 & 2 MHz

**One of a kind Fusion Tip** for enhanced topical penetration

**Unique Tiger Tip™ technology's semi-insulated needles** to treat more tissue at multiple depths

**10 different tips** Multi-needle arrays in various densities. Single-needle tips at various depths

**Single-needle handpiece** to precisely target and improve blemishes on the skin



# Indications for Use

The **Potenza** treatment tightens skin\*, improves blemishes on the skin and results in the regeneration of elastin and collagen

**All skin types, anywhere on the body, any time of year**

---

**FDA Indication:** Electrosurgical (RF) device for use in dermatologic and electronic surgical procedures for electrocoagulation and hemostasis



\*Through soft tissue coagulation

CYNO\URE®

# Fusion Tip's Unique Dual Air Chamber

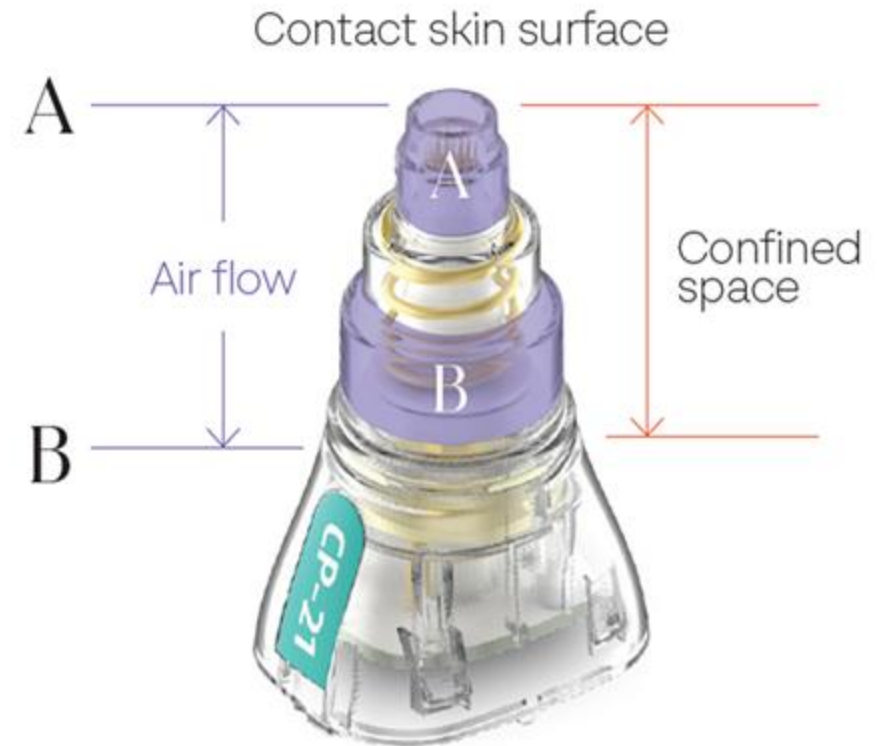
Inside the tip, there are chambers "A" and "B"

+As the needles move, a change in pressure occurs between these chambers.

+When needles are depressed towards the skin a negative pressure occurs in Space B creating a suction effect. This creates the "enhanced engagement with the tissue".

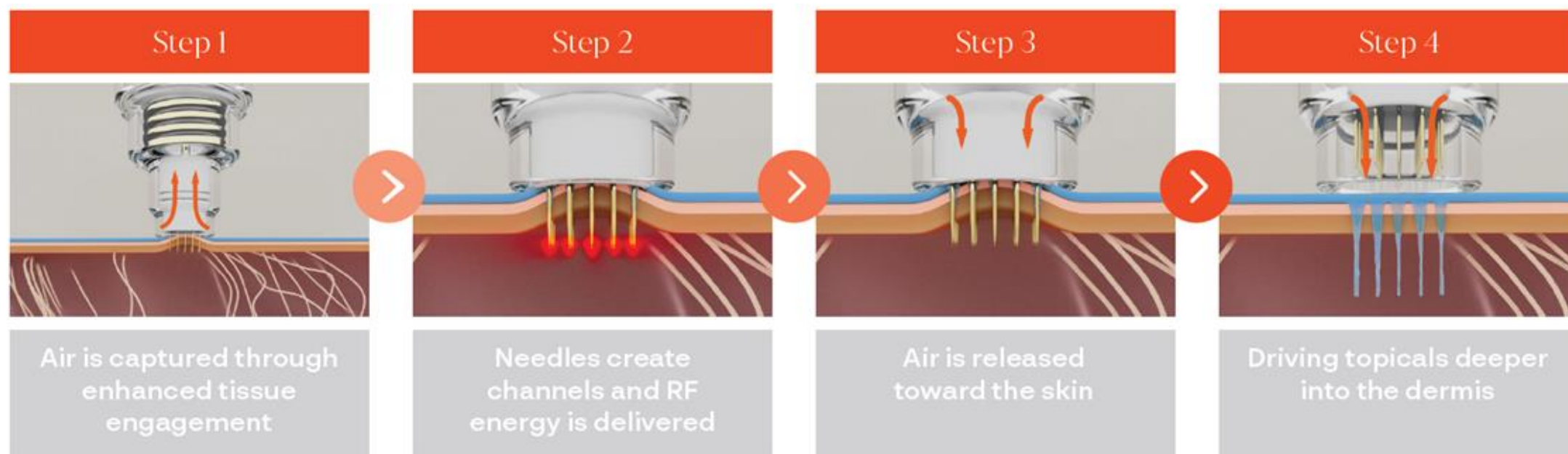
+As needles are retracted from the skin, the pressure within these chambers changes.

+The positive pressure in space B results in a release of air at the treatment site which may aid in the retraction of the needles.

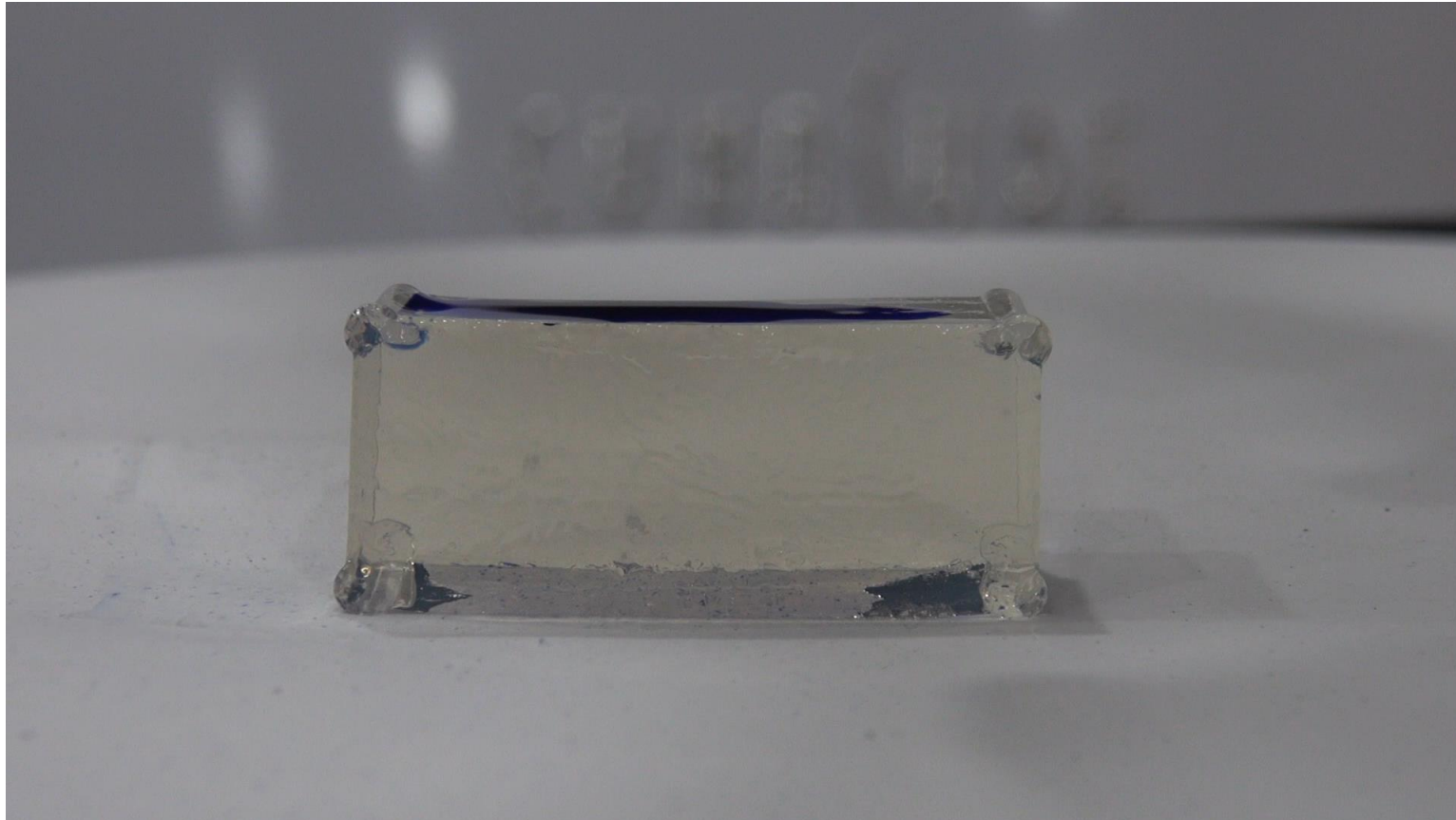




# Fusion Tip Mechanism of Action (MOA)



# Fusion Tip Ink Mechanism of Action (MOA)



# Patient Assessment and Consultation

---

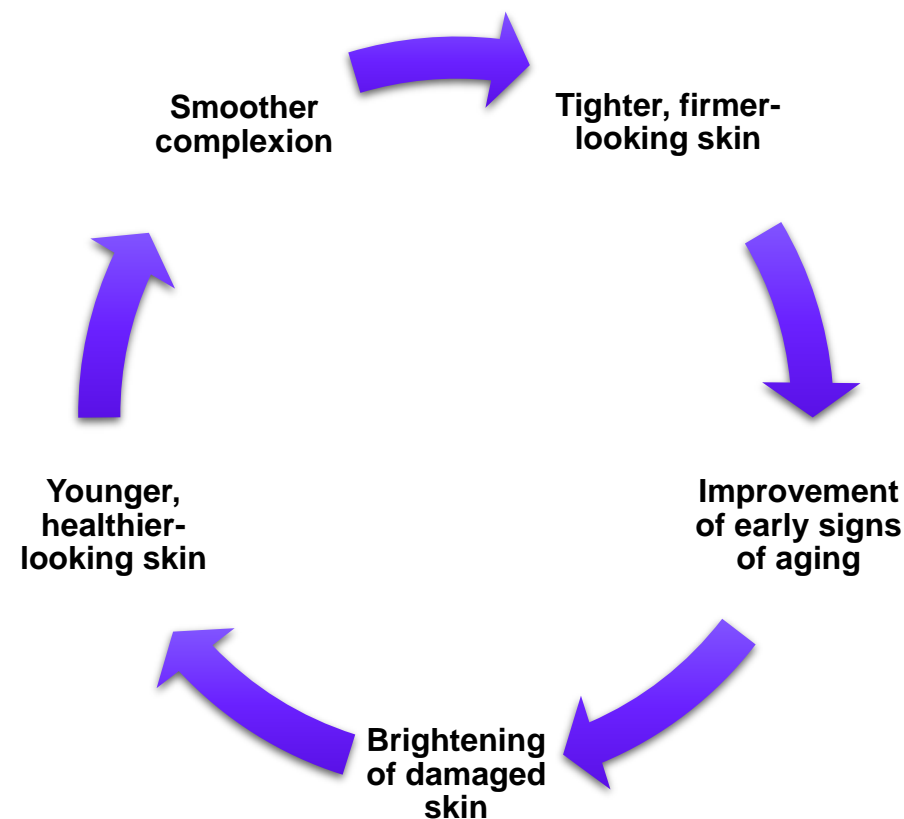
Potenza™  
RF MICRONEEDLING





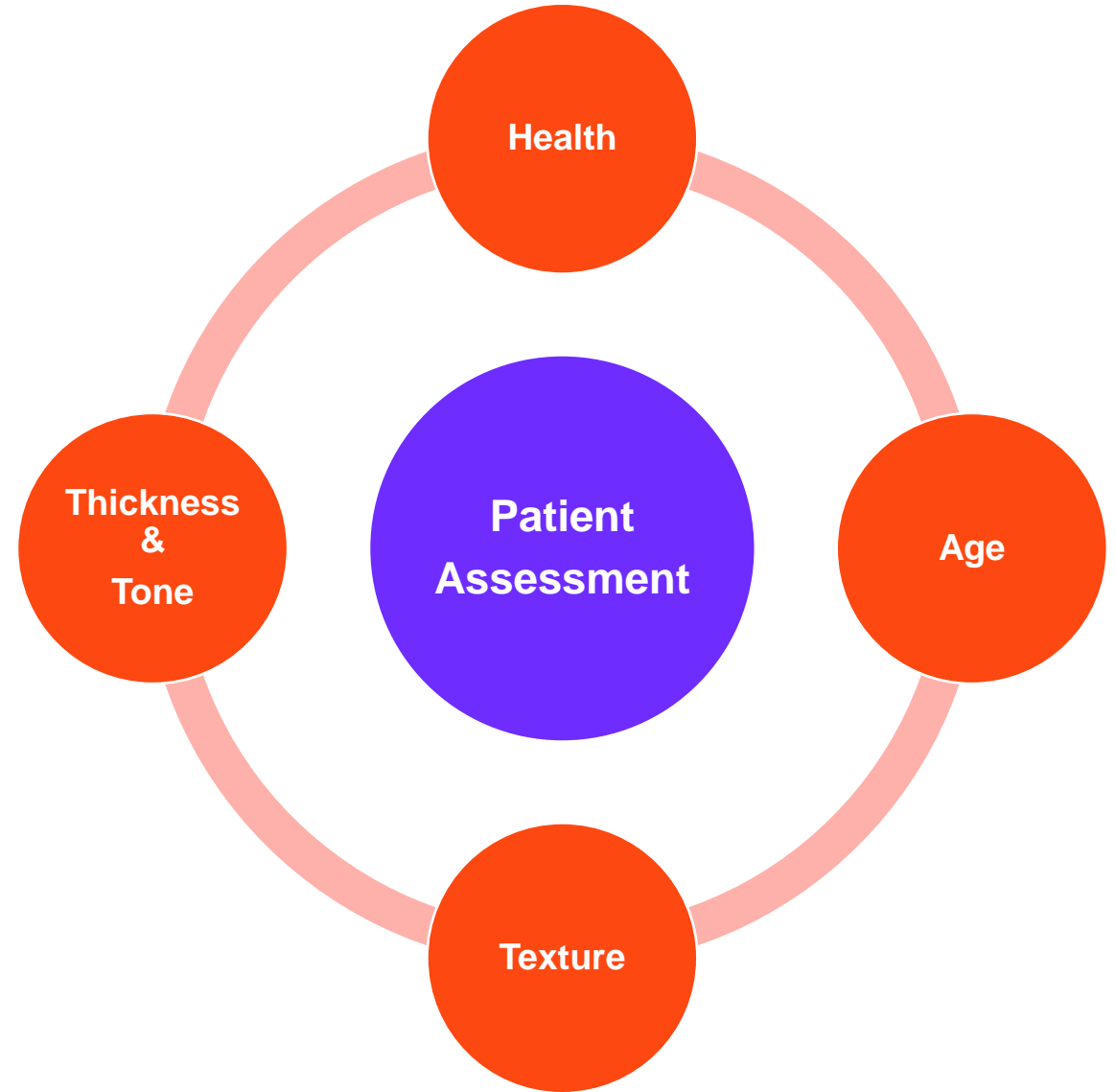
# Patient Expectations

Microneedling with the Potenza can help to address the most common aesthetic concerns because of the added benefit of advanced radiofrequency technology.



# Clinical Patient Analysis

A thorough patient assessment is recommended prior to treatment. Proper assessment will help to determine the appropriate tip used to conduct the treatment.



# Treatment Intervals and Session



3 – 5 treatments

4 – 6 weeks apart

Patients may notice improvement after 1<sup>st</sup> or 2<sup>nd</sup> treatment

Skin will continue to improve over the next 6 -12 months post treatment

Results will vary from patient to patient

It is advised to photo document each treatment session

# Patient Pretreatment Guidelines

- It is advised that consent forms, and pre- and post-treatment instructions are signed and reviewed.
- A topical anesthetic may be applied. Other pain management systems, such as Nitronox, may also be used during the treatment.
- Test spots are recommended prior to treatment to determine patient suitability and tolerability to treatment. Darker skin may require 48-72 hours for the test spot to be assessed.
- For the Fusion tip, apply 3-4 test spots at 23W and 100ms. Adjust settings as needed. Appropriate clinical end point should result in more moderate tissue edema, erythema, and trace pinpoint bleeding.



# Disposable Neutral Pad

- The NEM pad must be used for all monopolar treatment
- Place the pad close to the treatment area
- The **Single-Use** neutral pad requires direct skin contact
- It is advisable to check the pad throughout treatment for wrinkles or if it is not fully adhered
- Encourage patient to let you know if it starts to feel warm
- If multiple passes are performed, the pad may stay adhered to the patient while in Bipolar mode
- Do not reuse.





# Clinical Use

---

Potenza™  
RF MICRONEEDLING



# Reference Materials

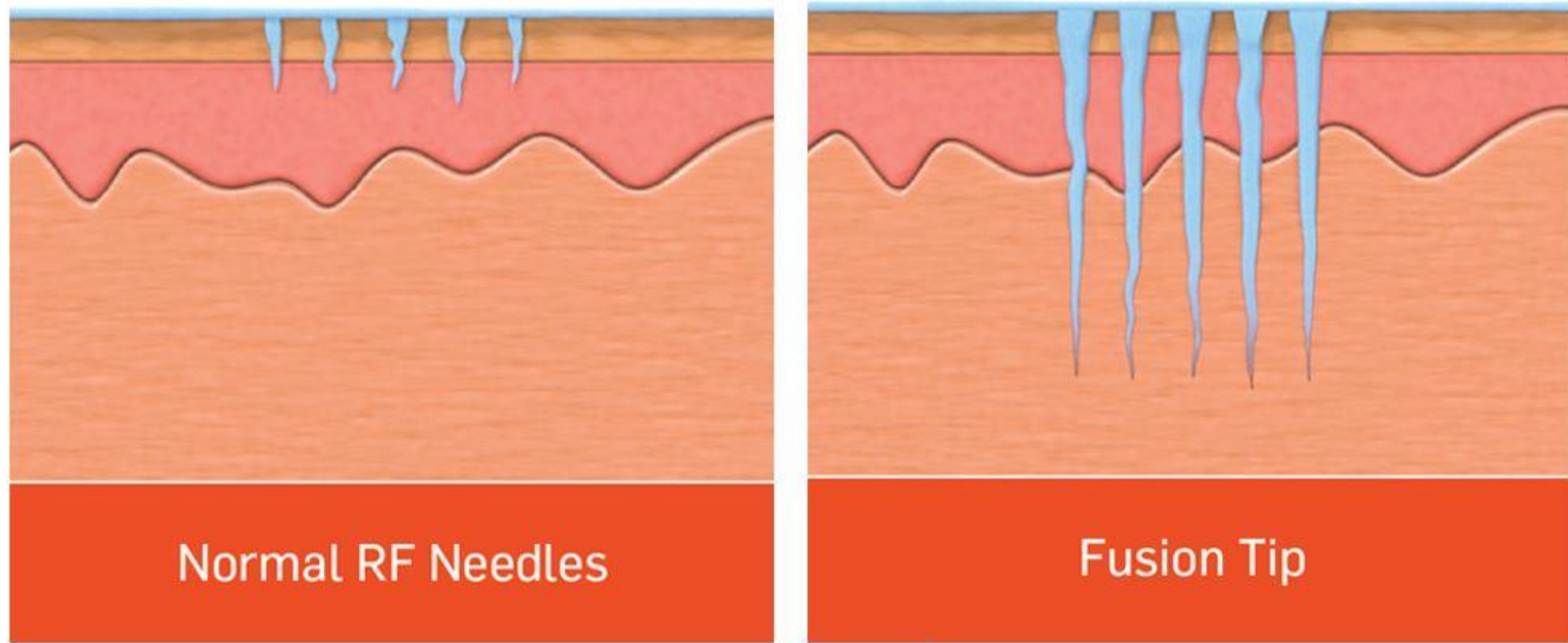
Refer to AMPS for updated manuals.



Always refer to the Potenza Clinical Reference Guide and Operator's Manual for information regarding the product.

- Cynosure assumes no liability whatsoever for any damage, loss, or injury resulting from an application of a product which is not in strict accordance with its Operator's Manual and Clinical Reference Guide. Cynosure also assumes no liability for any damage or injury arising as a result of operator error or mistake.
- Usage of the product is based on the practitioner's knowledge and experience. The practitioner is solely responsible for treatment results. There is no guarantee that the expected or anticipated results will be achieved. For a full list of contraindications, cautionary criteria, and precautions, please reference the Clinical Reference Guide prior to treatment.
- Training conducted on the device and all treatments performed should adhere to the guidelines found within the Clinical Reference Guide.

The **Fusion Tip** is the **First and Only** tip to provide **enhanced topical penetration** to maximize results



**RESULTS: 67% Deeper** penetration of topical into the channels

# One of a Kind Fusion Tip used for enhance topical penetration to maximize results

- + **The first and only tip to provide enhanced topical penetration to maximize results**
- + Uses a dual-air chamber design to capture and release air towards the skin in order to enhance the penetration of topicals into the channels
  - + 21 insulated needle array
  - + Adjustable Depth 0.5-2.5 mm
  - + Operates in monopolar at 1 MHz
  - + Enhances topical penetration
  - + Designed for treating at a higher energy and impact





# Fusion Tip Treatment Protocols

---

Potenza™  
RF MICRONEEDLING





# Directional Treatment Guidelines

## 1. Forehead



Pull tissue upward on the forehead

## 2. Around the Eyes



Pull skin outward from eyes

## 3. Cheek and Jawline



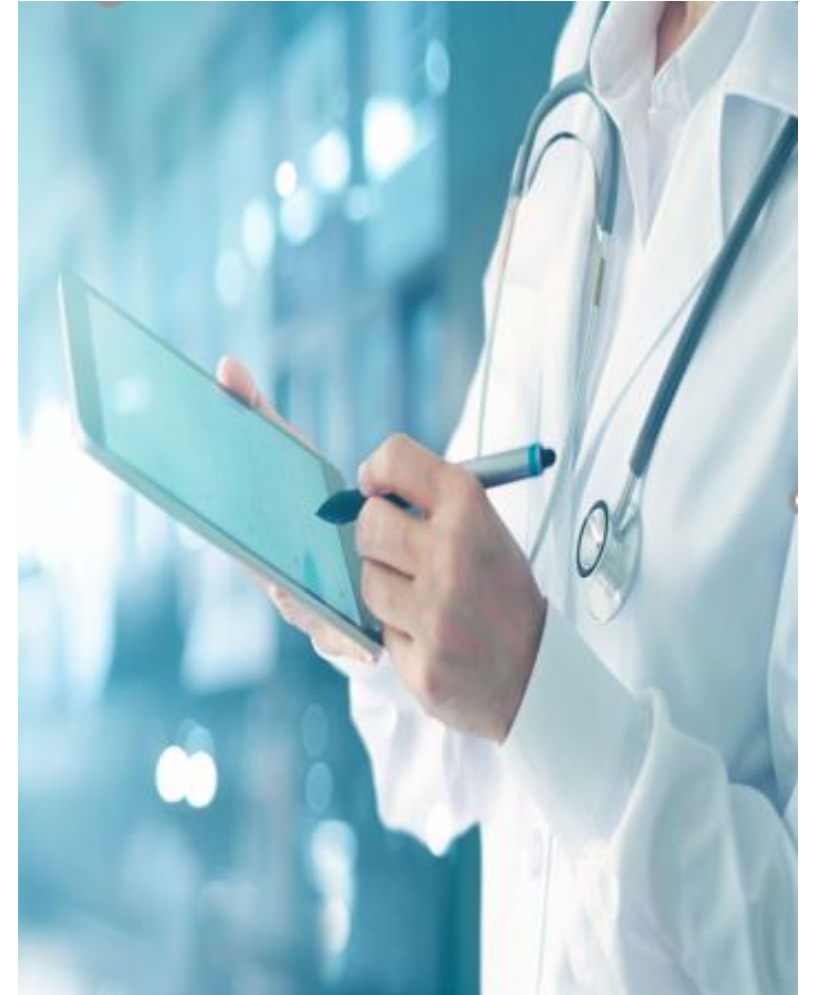
Do not treat over vocal cords, large blood vessels, the trachea, or thyroid. Pull tissue off the structure and then perform treatment

## 4. Neck



# Treatment Recommendations

- Begin treatment laterally
- Follow protocols per needle tip
- Alternate directions per pass
- Achieve all passes per zone before moving to next area
- Start with deepest pass first. Adjust by .25mm to achieve tissue coagulation at varying depths
- Apply pulses uniformly without gaps
- Vary needle tips, depth and parameters based upon the patient's skin characteristics and treatment location
- Follow Pre- and Post-treatment recommendations found in the CRG



# Selecting a Tip for Treatment

**Patient Assessment may result in the choosing of 1 or more tips to conduct treatment.**

## Insulated Tips

- Perfect for precise, lateral energy delivery
- Ideal for treating thinner tissue

## Tiger Tip

### Semi-Insulated Tips


- Simultaneous treatment of epidermis and dermis
- Ideal for treating denser tissue

## Fusion Tip

### Cushion Plus Tip

- Enhances the penetration of topicals
- Designed to be used at a higher setting

# Fusion Cushion Plus Tip Recommended Parameters

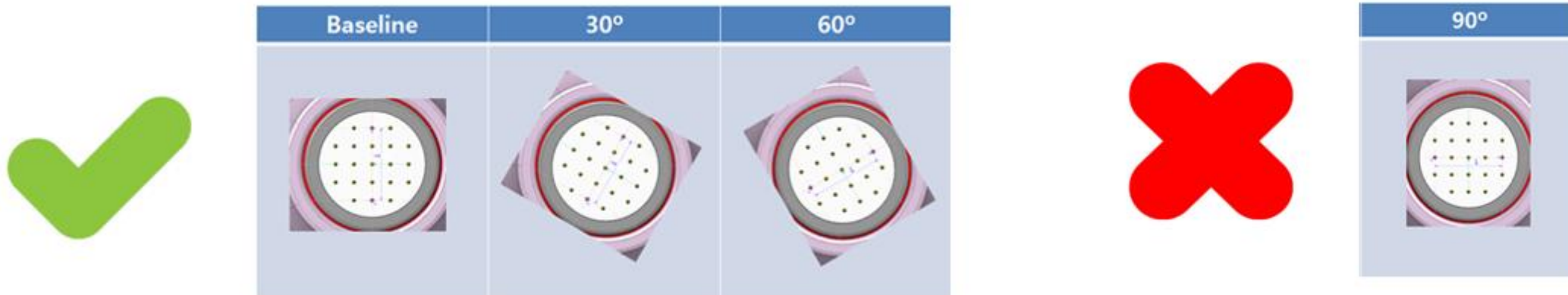
Tip	Icon	Mode	Frequency	Depth (mm)	Method of Action	Hand Piece
CP-21		Monopolar	1 MHz	0.5 – 2.5 mm	Enhanced Tissue Engagement	Motor

## Treatment Reminders

- Always use a new, sterilized, single-use, disposable tip
- Begin by conducting test spots accordingly
- Set needle depth according to treatment site, skin condition, and thickness
- A neutral (NEM) pad must be placed on the patient's back

# Recommended Tip Rotation

Stacking can be performed with this tip. When performing stacking, the tip should be twisted at 30-degree and 60-degree intervals. 90-degrees is not recommended due to the needle insertion being the same as the original pulse.



- If stacking: 1-2 pulses of stacked pulses, with 30° rotation and no more than 25% overlap row to row
- If not stacking: 1-3 passes may be performed



# Fusion Cushion Plus Tip Recommended Parameters

## Pass 1

Take care to decrease or increase needle depths to correspond with depth of the tissue being treated.

**Treating at power greater than 30 watts or 2530 mJ/pulse puts patient at a risk for adverse events and is not recommended.**

Pass	Target	Depth (mm)	Mode	Frequency	Power	Pulses & PW	Impact	mJ/Pulse
Pass 1	Deeper Dermis	1.5 -2.0+	Monopolar	1 MHz	23 W	1 Pulse 110 ms	7	~ 2530

**!** The Fusion Cushion Plus tip is designed for treating at a higher mJ/pulse. These parameters should **NOT** be used with the I-tips or Tiger S-tips.

# Fusion Cushion Plus Tip Recommended Parameters

## Pass 2 & 3

Take care to decrease or increase needle depths to correspond with depth of the tissue being treated.

**Treating at power greater than 30 watts or 2530 mJ/pulse puts patient at a risk for adverse events and is not recommended.**

Pass	Target	Depth (mm)	Mode	Frequency	Power	Pulses & PW	Impact	mJ/Pulse
Pass 2 & 3	Upper Dermis	0.5 – 1.25	Monopolar	1 MHz	5 W	1 Pulse 40 ms	7	~200

- A total of 3 passes can be performed. Continue to monitor for suitable patient endpoint to determine the number of passes performed
- 1 -3 passes may be performed if **NOT** stacking pulses

# Questions?

---



---

# Thank You!

---

©2021. Cynosure, LLC. All rights reserved. Cynosure is a registered trademark of Cynosure, LLC. Tiger Tip is a trademark of Cynosure, LLC.

Potenza is a trademark of Jeisys Medical, Inc. Cynosure, LLC. owns exclusive rights to photography. Use of photography without written permission of Cynosure is prohibited. Model for illustrative purposes only and not an actual consumer of the product.

The Potenza radiofrequency microneedling device is intended for electrocoagulation and hemostasis of soft tissue for dermatologic conditions. Potential side effects include temporary redness, temporary tingling, and burning sensation while receiving treatment. Like all medical procedures, not all patients are suitable for the treatment. A qualified practitioner is solely responsible for evaluating each subject's suitability to undergo treatment and for informing those being treated about any risks involved with the treatment, pre-and postoperative care, and any other relevant information. Individual results may vary and are not guaranteed.



CYNOSURE® BEAUTIFUL  
ENERGY

